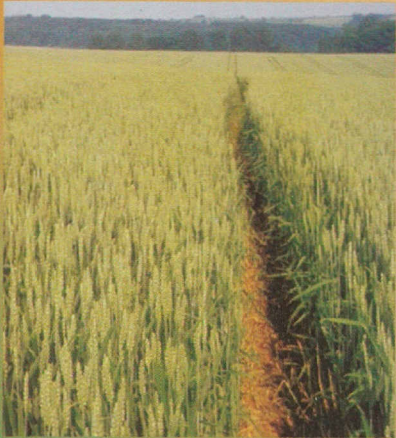


# Ralon<sup>®</sup> Super EW 75



## Composition

Fenoxaprop-P-ethyl 69 g/l  
Mefenpyr-diethyl 75 g/l

## Mode of Action

- **Fenoxaprop-P-ethyl**, the active ingredient inhibits the biosynthesis of fatty acids (inhibition of Acetyl CoA carboxylase). It is absorbed rapidly by the plants via the leaves and stem and transported to the sites of action within the plant. It is rapidly metabolized to the free acid which is a compound with the main herbicidal efficacy. For application in cereal crops, the Fenoxaprop-P-ethyl formulations contain the safener, Mefenpyr-diethyl.
- **Mefenpyr-diethyl** enhances the degradation of the active ingredient to water soluble non-phytotoxic products without changing the metabolic pathway of Fenoxaprop-P-ethyl. This safener further increases the crop tolerance to Fenoxaprop-P-ethyl, while maintaining the same high level of grass weeds control.

## Grass Weeds Spectrum

The following grass weeds are effectively controlled by Ralon<sup>®</sup> Super EW 75:

- |                      |                        |
|----------------------|------------------------|
| - Love grass         | <i>Setaria spp</i>     |
| - Wild oats          | <i>Avena spp</i>       |
| - Wild finger millet | <i>Eleusine Indica</i> |
| - Couch grass        | <i>Digitaria spp</i>   |
| - Guinea grass       | <i>Panicum spp</i>     |
| - Star grass         | <i>Cynodon spp</i>     |
| - Eragrotis spp      |                        |

## Application

Ralon<sup>®</sup> Super EW 75 is applied post emergence of the crops (wheat, barley and rye) and grass weeds. The best time of application is from 2-4 leaf stage to early tillering of grass weeds. The cereal crop stage during application should be up to end of tillering.



## Rate of Application

Ground application	0.75 - 1.0 litre per hectare in 150 - 200 litres of water.
Aerial application	0.75 - 1.0 litre in 30 - 50 litres water per hectare.
Knapsack application	50 ml per 15 - 20 litres of water.

## Tank mix for the control of Broad Leaf Weeds

When **Ralon® Super EW 75** at the rate of 0.75 - 1.0 litre is mixed with **Buctril MC** at the rate of 1.25 litres in 150 - 200 litres of water per hectare, the following weeds are controlled:

### Broad Leaf Spectrum

- Black bind weed (*Polygonum convolvulus*)
- Black Jack (*Bidens pilosa*)
- Black Nightshade (*Solanum nigrum*)
- Chinese lantern (*Nichandra physaloides*)
- Devils thorn (*Emex spp*)
- Fat hen (*Chenopodium album*)
- Gallant soldier (*Galinsoga parviflora*)
- Mexican marigold (*Tagetes minuta*)
- Mexican poppy (*Argemone mexicana*)
- Naivasha weed (*Conyza stricta*)
- Pig weed (*Amaranthus album*)

## Application Window with Ralon® Super EW 75:

