

# TORDON 101

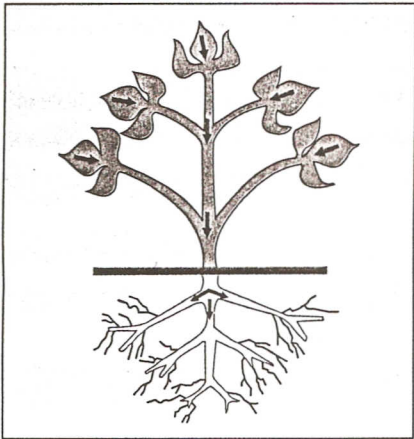
## GENERAL

**TORDON 101 MIXTURE** is a potent, residual, systemic herbicide for the control of problem annual and perennial broad-leaved weeds, bushes and woody vines in pastures, sugar cane, sisal and in non-crop lands such as Pipelines, Railways and Industrial storage and Manufacturing sites.

## COMPOSITION

Picloram : 65 g/l  
2,4-D Amine Salt : 240 g/l

## MODE OF ACTION



Picloram and 2,4-D act in a similar way to the natural auxins responsible for all elongation in plants.

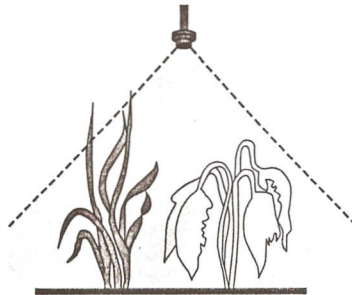
Picloram, in a slow systemic action, disrupts the metabolism of the nucleic acid in the cells of the root and stem tip meristems.

This systemic action is completed by the action of 2,4-D which accelerates the desiccation of the canopy of the treated bush, leading to the complete destruction of even the most difficult to control woody plants.

**NOTICE : DO NOT ALLOW CATTLE TO GRAZE WITHIN 21 DAYS OF THE APPLICATION OF TORDON 101. READ THE LABEL BEFORE ANY USE. \* TRADEMARK OF DOWELANCO.**

## SELECTIVITY

**TORDON 101** is selective of grasses in pastures and rangeland, and may be used in sugar cane and sisal plantations.



## APPLICATION AND RATE OF USE

For the control of bushes, trees, woody vines and broadleaved weeds in sugar cane, sisal, pastures and rangeland.

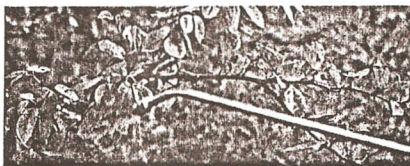
**1 litre/100 litres** of water for annual and perennial broad leaved weeds.

**1,5 litre/100 litres** of water for bushes, small trees and woody vines.

**2,0 Litres/100 litres** of water for mature plants.

## FOR WATTLE AND EUCALYPTUS CONTROL

### A/OVERALL LEAF STEM SPRAY



Wattle :  
500 ml **TORDON 101 MIXTURE** per 100 litres water (50 ml per 10 litres water)

Eucalyptus :  
1 litre **TORDON 101 MIXTURE** per 100 litres water (100 ml per 10 litres water)

Respray as necessary.

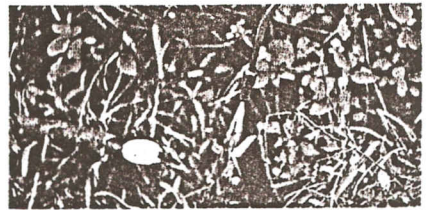
**NOTE :** Add a non-ionic agricultural wetting agent at the rate of 60 ml per 100 litres of final spray solution.

### CAUTION :

1. Regrowth or coppice from Eucalyptus stumps should be at least 60 cm high at the time of spraying.
2. Do not apply to wet foliage or if rain is possible within one or two hours.

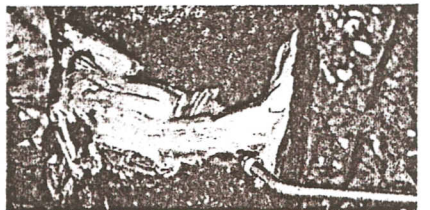
### B/ CUT STUMP TREATMENT

**TORDON 101** can also be applied undiluted, or in a 1 to 1 dilution with water for tree injection and cut stump treatment.



Immediately after cutting each tree down, apply the solution.

Wattle : ..... 2 litre/hl  
Eucalyptus : ..... 4 litre/hl

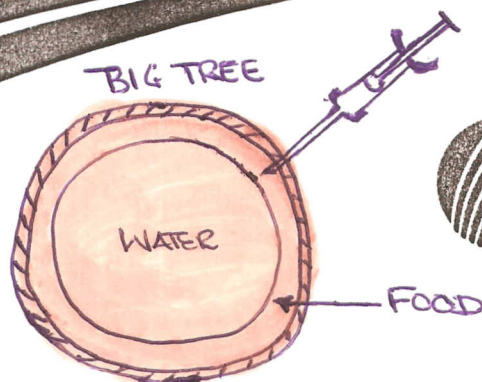


Limited regrowth sometimes occurs. Should it become extensive, apply **TORDON 101 MIXTURE** as an Overall Leaf-Stem Spray, Tree Injector or Partial Frill Treatment.

**NOTE :** Add a non-ionic agricultural wetting agent at the rate of 60 ml per 100 litres of final spray solution.

### CAUTION :

1. Cut the trees down to 30 cm or less, from the soil surface and remove all foliage-bearing growth.
2. Check for adequate sapflow and bleeding.



# DowElanco

DowElanco Export S.A.  
B.P. 229 - 06904 Sophia Antipolis cedex.